



CD/K/654:2010
ICS 65.140

EAST AFRICAN STANDARD

Fixed type beehive stand — Specification

EAST AFRICAN COMMUNITY

Foreword

Development of the East African Standards has been necessitated by the need for harmonizing requirements governing quality of products and services in East Africa. It is envisaged that through harmonized standardization, trade barriers which are encountered when goods and services are exchanged within the Community will be removed.

In order to meet the above objectives, the EAC Partner States have enacted an East African Standardization, Quality Assurance, Metrology and Test Act, 2006 (EAC SQMT Act, 2006) to make provisions for ensuring standardization, quality assurance, metrology and testing of products produced or originating in a third country and traded in the Community in order to facilitate industrial development and trade as well as helping to protect the health and safety of society and the environment in the Community.

East African Standards are formulated in accordance with the procedures established by the East African Standards Committee. The East African Standards Committee is established under the provisions of Article 4 of the EAC SQMT Act, 2006. The Committee is composed of representatives of the National Standards Bodies in Partner States, together with the representatives from the private sectors and consumer organizations. Draft East African Standards are circulated to stakeholders through the National Standards Bodies in the Partner States. The comments received are discussed and incorporated before finalization of standards, in accordance with the procedures of the Community.

Article 15(1) of the EAC SQMT Act, 2006 provides that "Within six months of the declaration of an East African Standard, the Partner States shall adopt, without deviation from the approved text of the standard, the East African Standard as a national standard and withdraw any existing national standard with similar scope and purpose".

East African Standards are subject to review, to keep pace with technological advances. Users of the East African Standards are therefore expected to ensure that they always have the latest versions of the standards they are implementing.

© East African Community 2010 — All rights reserved*

East African Community

P O Box 1096

Arusha

Tanzania

Tel: 255 27 2504253/8

Fax: 255-27-2504481/2504255

E-Mail: eac@eachq.org

Web: www.each.int

Introduction

Beehives are kept on stands to protect bee-colonies from ants and to protect boxes from termites, etc. Beekeeping industry is now gradually switching over from stationary type to migratory type of beekeeping. Particularly while using bee-colonies for pollination of agricultural crops bee-colonies are migrated to farms for a short duration. Even in their permanent honey-flow sites bee-colonies are required to be migrated locally for deriving maximum benefit of the flora. A portable stand, particularly a fixed one, therefore, forms an essential accessory of the beehive. The stand should be strong but light in mass, compact and handy for easy transportation.

In the preparation of this East African Standard, the following sources were consulted extensively:

IS 1735-2:1978(R2002), *Specification for Beehive Stand — Part 2: Fixed Type*

Codex Alimentarius website: http://www.codexalimentarius.net/mrls/pestdes/jsp/pest_q-e.jsp

USDA Foreign Agricultural Service website: <http://www.mrldatabase.com>

USDA Agricultural Marketing Service website: <http://www.ams.usda.gov/AMSV1.0/Standards>

USDA Plant Inspectorate Service website: http://www.aphis.usda.gov/import_export/plants

European Union: http://ec.europa.eu/sanco_pesticides/public

Assistance derived from these sources is hereby acknowledged.

Draft for comments only — Not to be cited as East African Standard

Fixed type beehive stand — Specification

1 Scope

This East African Standard specifies the requirements for fixed type mild steel stand for keeping beehives in the field.

2 Normative references

The following referenced documents are indispensable for the application of this document. For dated references, only the edition cited applies. For undated references, the latest edition of the referenced document (including any amendments) applies.

ISO 6362-3, *Wrought aluminium and aluminium alloy extruded rods/bars, tubes and profiles — Part 3: Extruded rectangular bars — Tolerances on shape and dimensions*

ISO 6362-5, *Wrought aluminium and aluminium alloy extruded rods/bars, tubes and profiles — Part 5: Extruded round, square and hexagonal bars — Tolerances on shape and dimensions*

ISO 6362-6, *Wrought aluminium and aluminium alloys — Extruded rods/bars, tubes and profiles — Part 6: Round, square, rectangular and hexagonal tubes — Tolerances on shape and dimensions*

ISO 16143-1, *Stainless steels for general purposes — Part 1: Flat products*

ISO 16143-2, *Stainless steels for general purposes — Part 2: Semi-finished products, bars, rods and sections*

ISO 16143-3, *Stainless steels for general purposes — Part 3: Wire*

ISO 657, *Hot-rolled steel sections*

3 Size

The size of the fixed type iron stand shall be as shown in Figure 1.

4 Material

The fixed type stand shall be constructed from mild steel pipe of 40 mm diameter, 3 mm thickness and 530 mm length. For the water trough 0.63 mm thick galvanized steel should be used. The central pipe rod should be made from iron pipe of 40 mm diameter and 530 mm length.

5 Constructional details

5.1 Beehive support platform

A mild steel flat 3 mm thick and 240 mm long shall be welded widthwise on the centre of the upper tip of the central pipe rod. Two mild steel flats 3 mm thick and 380 mm long shall be welded widthwise in the centre to the tips of the cross-welded mild steel flat on the upper side. The four tips of these two steel flats shall be bent at right angle to a length of 30 mm. A circular hole shall be made in each of the four tips for tying the beehives placed over the stand.

5.2 Ground support

The stand shall be supported on the ground by means of four legs. The legs shall be made of mild steel flats of 3 mm thickness and 560 mm length. Two such pieces should be used. This should be

bent in semi-circular fashion and the tips straightened. The straight end portion shall be 30 mm in length with a circular hole in each of the four such tips to enable to nail the stand securely to the ground. The two pieces shall be welded to lower end of the pipe in the centre so that four legs spread at 90°; and project outside to a length of at least 210 mm from the centre with the central pipe rod standing vertical in the centre. The height from the ground to the base of the central pipe shall be only 90 mm and height from ground level to beehive support platform shall be 610 mm.

5.2.1 Nails

Four nails 120 mm in length and of 6 mm diameter with one end flattened and other pointed shall be used for nailing the stand to the ground securely.

5.3 Water trough

A water trough 40 mm deep with a diameter of 230 mm should be prepared out of 0.63 mm galvanized steel with a central circular hole 40 mm in diameter to enable the central pipe to pass through it. This water trough is passed through the central pipe rod and brought to the point 305 mm from the lower tip of the central pipe rod and welded to the central pipe so that there shall be no leakage of water when water is poured inside for protection of the beehive colony from the menace of ants, etc.

6 Shape and design

The parts of the fixed stand shall be as far as possible of the shape and dimensions given in Figure 1.

7 Workmanship and finish

7.1 The bending of the flange should be identical on both ends. All the pieces should be cut at right angles to the length and should have smooth finish;

7.2 The welding of the small parts should be exactly at equal distance from the centre of the tube opposite to each other as shown in Figure 1. The welding of the parts should be satisfactory and without faults.

7.3 The stand should be suitably coated with a protective paint.

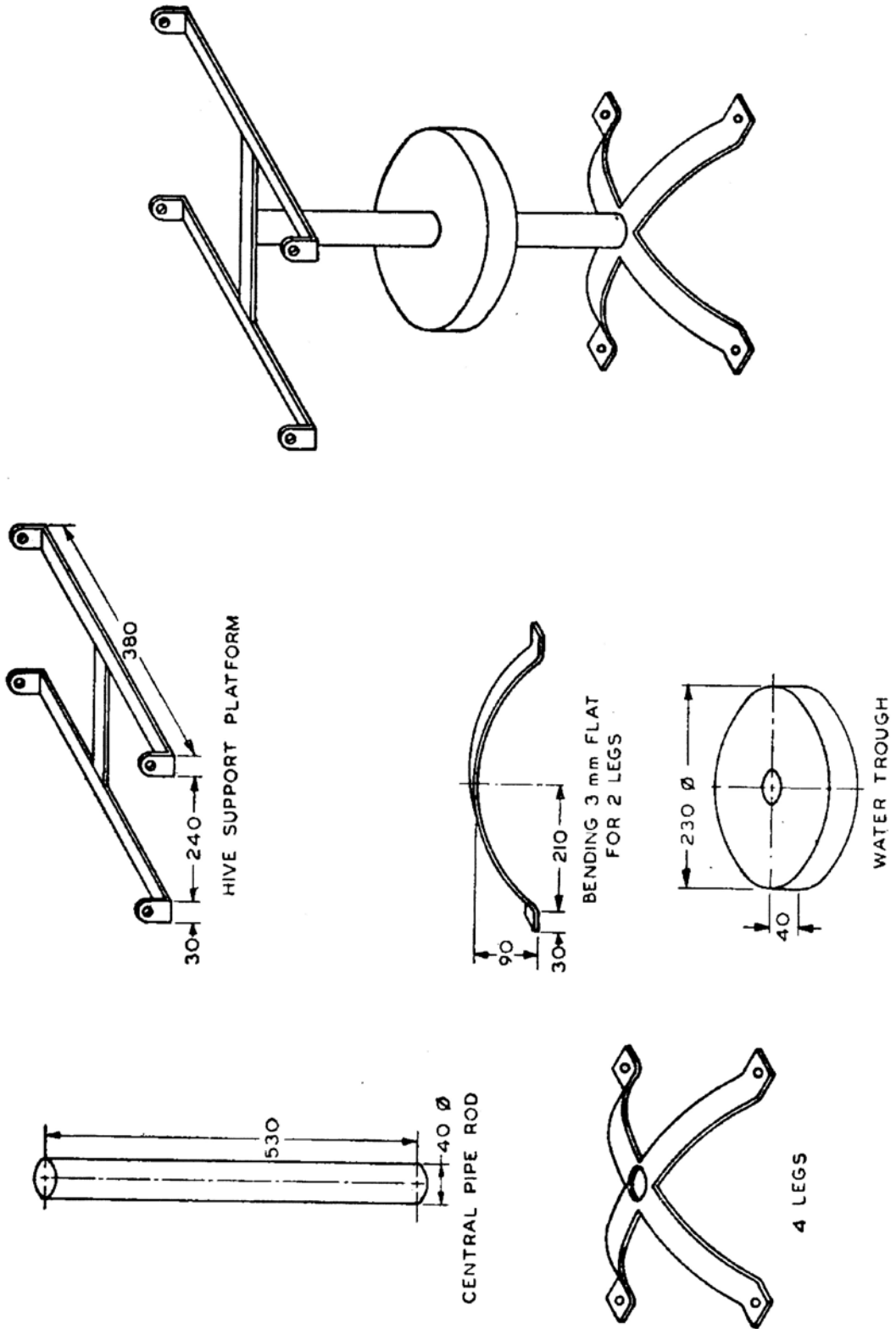
8 Marking

8.1 Each fixed type beehive stand shall be marked with the following particulars:

- a) Manufacturer's name and the trade-mark,
- b) Year of manufacture, and
- c) Batch and serial or code number.

8.2 Each fixed type beehive stand may also be marked with a Certification Mark.

ward



All dimensions in millimetres.

Figure 1 — Beehive stand — Fixed type

Draft for

Draft for comments only — Not to be cited as East African Standard

Draft for comments only — Not to be cited as East African Standard